

---

# FINANCING OF QUÉBEC'S UNIVERSITIES



**March 25th 2008**

FQPPU-CFU

# Overview of the presentation



- **Why examine university financing**
- **Global summary of university financing**
- **The « funding formula » and reinvestment**
- **Sources for data and reports**
- **Recent trends in ratings**
- **Preliminary conclusions**
- **FQPPU's « Comité sur le financement des universités »**

# Context



- **Financing as realpolitik for the universities**
- **Underfunding of universities**
- **Effects on teaching and governance**
- **Unavailable or unreliable data**
- **Mandate of the CFU**

# Universities' operating budget

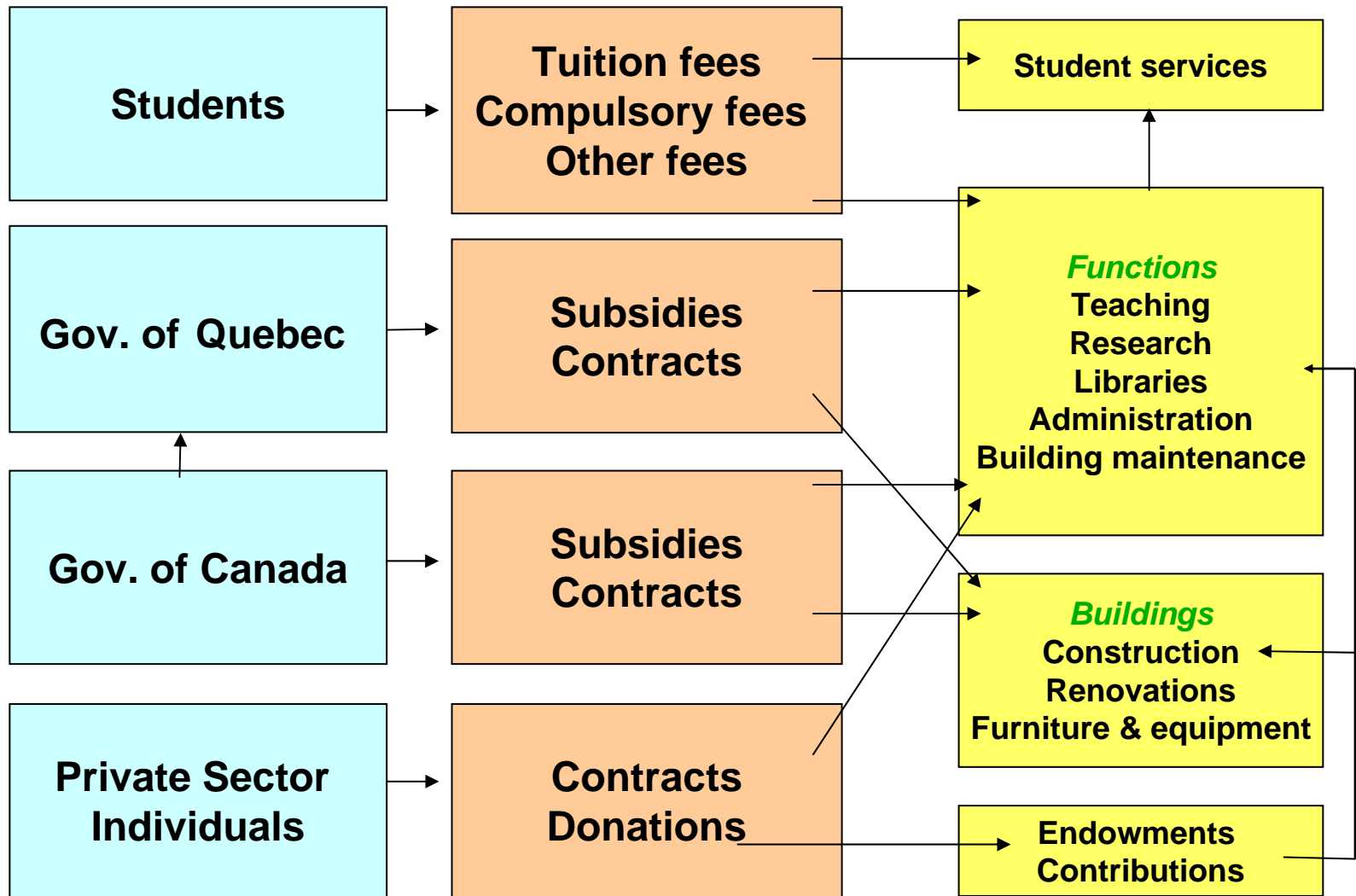
---

- In 2004-2005, the operating budget for Quebec universities was

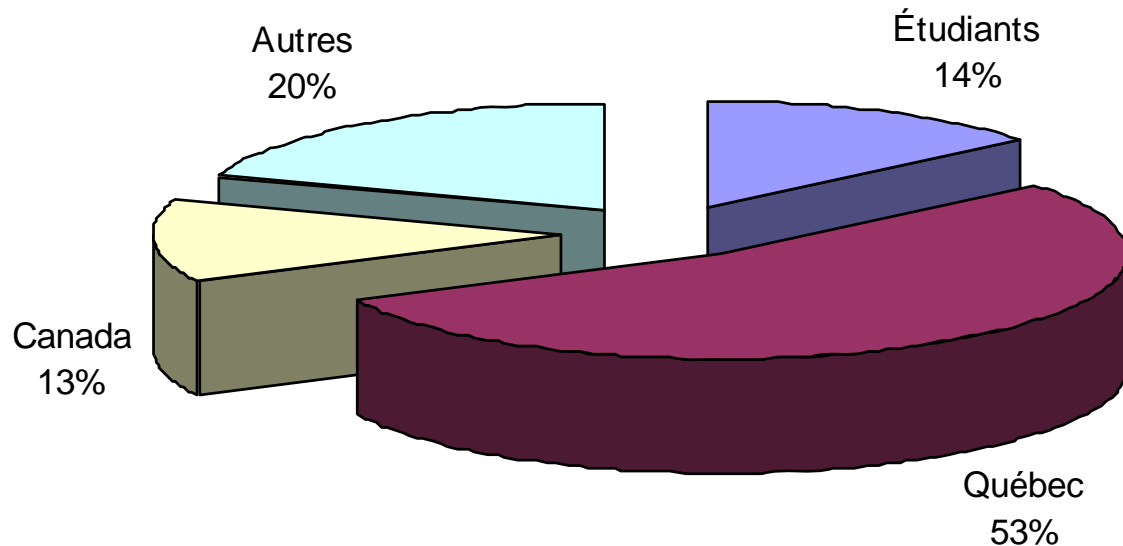
**\$4,100,000,000**

- This amount **does not include** the budget for capital assets

# Funding sources



# Revenue sources for Quebec universities



**2004-2005 revenue (operating and restricted funds):  
4,078,402,157 \$**

# Allocation of revenues

---

- **This allocation includes under the Quebec heading support from the federal government through equalization payments and transfers for post-secondary education.**
- **The federal support is estimated at between 20 and 35%, which explains the importance placed on negotiating transfer payments for higher education from the Government of Canada.**

# Budget allocations 2004-2005

---

• Teaching	1,709 M\$	42 %
• Research	1,061 M\$	26 %
• Support (libraries, computing, etc.)	276 M\$	7 %
• Administration	395 M\$	9 %
• Building maintenance	282 M\$	7 %
• Student services	149 M\$	4 %
• Ancillary services	124 M\$	3 %
• Service to the community	104 M\$	2 %
• Total	4,100 M\$	

# Quebec subsidies

---

- **2.03 million in 2006-2007 before reinvestment, 2.28 million in 2007-2008 including reinvestment and 2.46 million in 2008-2009 including reinvestment.**
- **Calculated on the basis of norms used to distribute all subsidies, excluding various adjustments.**
- **Norms and the funding formula are at :**  
**[www.mels.gouv.qc.ca/ens-sup/](http://www.mels.gouv.qc.ca/ens-sup/)**

# Operating grant 2006-2007

## Before reinvestment

---

# Operating subsidies from MELS in M\$

	2004-05	2006-07	2007-08
Teaching	1 174.8	1 311.8	1 397.6
Support	313.9	340.7	350.5
Land and buildings	167.0	195.1	195.1
Recalculating FTEs	114.1	-	73.0
Special missions	84.9	87.1	88.6
Recuperated revenues	(134.4)	(162.2)	(148.8)
Specific funding	280.0	258.5	234.5
Reinvestment	-	90.0	90.0
<b>Total</b>	<b>2,000.4</b>	<b>2,121.0</b>	<b>2,280.5</b>

# The « funding formula »

---

- **The main element of these norms is called « the funding formula », used to distribute a global amount decided upon by the government.**
- **The old formula comprised 11 disciplines and 3 levels of study.**
- **The new formula comprises 23 disciplines and 3 levels of study. It is based on the average costs reported in six large universities (more than 10,000 FTEs) and three specialized universities, in 2001-2002 and 2002-2003.**

# Old funding formula

Disciplinary fields	Undergrad	Masters	PhD
Perimedical	5.68	8.73	10.56
Paramedical	1.77	2.86	3.51
Physical sciences	2.03	5.70	8.14
Applied sciences	1.77	5.05	7.24
Social sciences	1.30	3.88	5.25
Education	1.37	3.33	4.58
Management *	1.00	2.56	3.55
Arts	2.00	4.65	6.34
Humanities	1.15	3.49	4.74
Law	1.14	3.48	4.73
Medicine	2.77	4.37	5.32

# New formula with weighted FTEs

Disciplinary groups	Undergrad	Masters	PhD
Dentistry	7.96	6.59	10.69
Veterinary medicine	9.73	9.41	10.69
Optometry	5.37	6.59	10.69
Paramedical	2.32	6.59	10.69
Nursing	1.77	2.29	10.69
Pharmacology	1.41	2.29	10.69
Physical sciences	2.11	6.59	10.69
Mathematics	1.41	4.42	9.42
Architecture	1.87	4.42	6.40
Engineering	2.11	4.42	9.42
Computer science	1.41	2.29	6.40
Agriculture, forestry,..	5.05	9.41	9.42
Social sciences	1.07	4.42	6.40

# La nouvelle grille de pondération des EETP (suite)

Disciplinary groups	Undergrad	Masters	PhD
Geography	2.11	6.59	10.69
Education	1.61	2.29	6.40
Physical education	2.11	4.42	10.69
Management	1.07	2.29	6.40
Fine arts	2.93	4.42	6.40
Film & photography	1.87	4.42	6.40
Music	3.30	4.42	6.40
Humanities *	1.00	4.42	6.40
Law	1.41	4.42	6.40
Medicine	4.07	6.59	10.69

# Determining the weightings

---

- **Study of actual costs as reported in annual financial reports of major universities.**
- **Establishing average cost for each discipline/level sector.**
- **Averages reduced to subsidized costs using tuition fees, which are currently uniform by discipline.**
- **Weightings expressed in relation to average cost of least expensive discipline : undergraduate humanities.**
- **MELS reassigns \$8M to medicine by adjusting the formula weight for this discipline. (Similar adjustments are foreseen for engineering and management, perhaps in 2008-2009?)**

### Nouvelle table de pondération de l'effectif étudiant pour fin de financement de la fonction enseignement

	Coûts moyens observés année universitaire 2002-2003			Frais de scolarité <sup>1</sup>	Coûts moyens subventionnés			1er cycle	2e cycle	3e cycle
	1er cycle	2e cycle	3e cycle		1er cycle	2e cycle	3e cycle			
Médecine dentaire	24 554 \$	20 508 \$	32 611 \$	1 059 \$	23 495 \$	19 449 \$	31 552 \$	7,96	6,59	10,69
Médecine vétérinaire	29 783 \$	28 828 \$	32 611 \$	1 059 \$	28 724 \$	27 769 \$	31 552 \$	9,73	9,41	10,69
Optométrie	16 915 \$	20 508 \$	32 611 \$	1 059 \$	15 856 \$	19 449 \$	31 552 \$	5,37	6,59	10,69
Spécialités non médicales en santé	7 896 \$	20 508 \$	32 611 \$	1 059 \$	6 837 \$	19 449 \$	31 552 \$	2,32	6,59	10,69
Sciences infirmières	5 231 \$	7 808 \$	32 611 \$	1 059 \$	4 172 \$	6 749 \$	31 552 \$	1,77	2,29	10,69
Pharmacie	5 231 \$	7 808 \$	32 611 \$	1 059 \$	4 172 \$	6 749 \$	31 552 \$	1,41	2,29	10,69
Sciences pures	7 300 \$	20 508 \$	32 611 \$	1 059 \$	6 241 \$	19 449 \$	31 552 \$	2,11	6,59	10,69
Mathématiques	5 231 \$	14 119 \$	28 870 \$	1 059 \$	4 172 \$	13 060 \$	27 811 \$	1,41	4,42	9,42
Architecture et design de l'environnement	6 585 \$	14 119 \$	19 941 \$	1 059 \$	5 526 \$	13 060 \$	18 882 \$	1,87	4,42	6,40
Génie	7 300 \$	14 119 \$	28 870 \$	1 059 \$	6 241 \$	13 060 \$	27 811 \$	2,11	4,42	9,42
Informatique	5 231 \$	7 808 \$	19 941 \$	1 059 \$	4 172 \$	6 749 \$	18 882 \$	1,41	2,29	6,40
Agriculture, foresterie et géodésie	15 981 \$	28 828 \$	28 870 \$	1 059 \$	14 922 \$	27 769 \$	27 811 \$	5,05	9,41	9,42
Sciences humaines et sociales	4 203 \$	14 119 \$	19 941 \$	1 059 \$	3 144 \$	13 060 \$	18 882 \$	1,07	4,42	6,40
Géographie	7 300 \$	20 508 \$	32 611 \$	1 059 \$	6 241 \$	19 449 \$	31 552 \$	2,11	6,59	10,69
Éducation	5 824 \$	7 808 \$	19 941 \$	1 059 \$	4 765 \$	6 749 \$	18 882 \$	1,61	2,29	6,40
Éducation physique	7 300 \$	14 119 \$	32 611 \$	1 059 \$	6 241 \$	13 060 \$	31 552 \$	2,11	4,42	10,69
Administration	4 203 \$	7 808 \$	19 941 \$	1 059 \$	3 144 \$	6 749 \$	18 882 \$	1,07	2,29	6,40
Beaux-arts	9 695 \$	14 119 \$	19 941 \$	1 059 \$	8 636 \$	13 060 \$	18 882 \$	2,93	4,42	6,40
Cinéma et photographie	6 585 \$	14 119 \$	19 941 \$	1 059 \$	5 526 \$	13 060 \$	18 882 \$	1,87	4,42	6,40
Musique	10 795 \$	14 119 \$	19 941 \$	1 059 \$	9 736 \$	13 060 \$	18 882 \$	3,30	4,42	6,40
Lettres	4 011 \$	14 119 \$	19 941 \$	1 059 \$	2 952 \$	13 060 \$	18 882 \$	1,00	4,42	6,40
Droit	5 231 \$	14 119 \$	19 941 \$	1 059 \$	4 172 \$	13 060 \$	18 882 \$	1,41	4,42	6,40
Médecine	13 066 \$ <sup>2</sup>	20 508 \$	32 611 \$	1 059 \$	12 007 \$	19 449 \$	31 552 \$	4,07	6,59	10,69

Médecin résident (EETp \* 65% et financé au poids du 1er cycle)

2,6455

Note 1: Correspond à 63 % des droits de scolarité de base.

Soit la proportion que représentait, en 2002-2003, l'enseignement dans les dépenses de fonctionnement (enseignement, soutien à l'enseignement et terrains et bâtiments)

Note 2: Correspond aux coûts moyens observés en 2002-2003:

Plus: ajout d'enveloppes récurrentes

	11 567 \$
	1 499 \$
	13 066 \$
<b>Enveloppes récurrentes</b>	
Ajustements particuliers médecine	6 750k\$
Stage pour les milieux cliniques	1 300k\$
	8 050k\$
	5 369
Divisé par le nombre de EEETP bruts médecine-1er cycle	1 499 \$

# How the formula is applied

---

- **MELS allots a budget envelope for teaching.**
- **Total weighted student enrolment data for all universities are obtained.**
- **The available envelope is divided by weighted FTEs to determine the standard value.**
- **The standard was \$3,226 in 2005-2006, \$3,294 in 2006-2007 and \$3,226 in 2007-08.**
- **The weighted FTE student enrolment for an establishment is multiplied by the standard value which then determines its share of the subsidy for teaching.**

# Reinvestment in December 2006

---

- **In December 2006, MELS announced a \$240M reinvestment for teaching, spread over 3 years.**
  - **\$90M for 2006-2007 and 2007-2008**
  - **\$60M for 2008-2009**
- **The recent federal budget confirmed the transfer of about \$112M expected in 2008-2009 for university teaching.**

# Reinvestment in December 2006

---

- **This reinvestment is seen in the following measures :**
  - **adoption of a new funding formula**
  - **a fatter annual envelope distributed using the new formula (\$50M)**
  - **ongoing compensation for regional universities (\$10M)**
  - **one-time compensation for regional universities (\$5M)**
  - **equalization payments to institutions worse off under the new formula of a minimum 4% increase of their 2006-2007 funding (\$16M)**
  - **compensation for « monodisciplinary » institutions (\$9M)**

# Reinvestment in March 2008

---

- **In March 2008, the Quebec government announced a \$250M reinvestment over 5 years: \$40M in 2008-2009 and \$53M in 2009-2010, over and above the federal transfer payments.**
- **Actual distribution of the \$40M has not been revealed despite the need to finance the costs of the university system and the growth in student use of it.**

# Reinvestment in 2006-2007 by institution

	Financement de l'enseignement selon la grille actuelle	Financement de l'enseignement selon la nouvelle grille, après réinvestissement	Total des ajouts de ressources
	1	2	3 = 2 - 1
Université Bishop's	11 321,5	12 228,5	907,0
Université Concordia	145 596,5	151 518,4	5 921,9
Université Laval	212 502,2	227 178,1	14 675,9
Université McGill	209 430,6	221 876,1	12 445,5
Université de Montréal	252 382,4	267 984,2	15 601,8
HEC	41 873,0	45 508,2	3 635,2
École Polytechnique	42 380,9	46 946,6	4 565,7
Université de Sherbrooke	109 762,8	114 791,1	5 028,3
Université du Québec	317 265,1	344 483,8	27 218,7
<b>Total</b>	<b>1 342 515,0</b>	<b>1 432 515,0</b>	<b>90 000,0</b>

UQAT	7 640,6	9 975,7	2 335,1
UQAC	24 674,5	26 408,5	1 734,0
UQAM	147 864,0	153 882,5	6 018,5
UQO	18 841,3	20 224,6	1 383,3
UQAR	19 317,7	22 722,8	3 405,1
UQTR	43 560,5	50 094,2	6 533,7
INRS	7 086,1	8 643,9	1 557,8
ENAP	5 932,5	6 462,9	530,4
ÉTS	29 415,7	32 601,3	3 185,6
TÉLUQ (siège social)	12 932,2	13 467,4	535,2
	<hr/> 317 265,1	<hr/> 344 483,8	<hr/> 27 218,7

# 2006-2007 reinvestment details

## (in \$K)

	Modification grille	Ajout région récurrent	Ajout région non récurrent	Ajout récurrent	Péréquation. aucun «perdant»	Minimum 4 % non récurrent	«Spéciaux» et mono-disciplinaire	Ajout Total
Bishop's	-535 \$	536 \$	601 \$	402 \$	-104 \$		8 \$	907 \$
Concordia	-8 072 \$			5 122 \$	2 950 \$	5 824 \$	98 \$	5 922 \$
Laval	7 916 \$			8 209 \$	-1 936 \$		487 \$	14 676 \$
McGill	6 156 \$			8 029 \$	-1 893 \$		154 \$	12 446 \$
Montréal	7 606 \$			9 683 \$	-2 283 \$		596 \$	15 602 \$
HEC	-3 216 \$			1 440 \$	1 776 \$	1 675 \$	1 960 \$	3 635 \$
Polytech.	-4 467 \$			1 412 \$	3 055 \$	1 695 \$	2 871 \$	4 566 \$
Sherbrooke	752 \$			4 116 \$	-970 \$	493 \$	638 \$	5 028 \$
U. de Québec	-6 139 \$	9 464 \$	4 649 \$	11 587 \$	-595 \$	6 041 \$	2 212 \$	27 219 \$
<b>TOTAL</b>	<b>0 \$</b>	<b>10 000 \$</b>	<b>5 250 \$</b>	<b>50 000 \$</b>	<b>0 \$</b>	<b>15 728 \$</b>	<b>9 022 \$</b>	<b>90 000 \$</b>
UQAT	-89 \$	1 490 \$	732 \$	281 \$	-85 \$		5 \$	2 335 \$
UQAC	-811 \$	1 250 \$	614 \$	889 \$	-225 \$		17 \$	1 734 \$
UQAM	-2 009 \$			5 432 \$	-1 281 \$	3 772 \$	104 \$	6 019 \$
UQO	-1 500 \$	1 608 \$	790 \$	646 \$	-173 \$		12 \$	1 383 \$
UQAR	619 \$	1 491 \$	733 \$	743 \$	-194 \$		14 \$	3 405 \$
UQTR	-95 \$	3 625 \$	1 781 \$	1 619 \$	-427 \$		31 \$	6 534 \$
INRS	1 313 \$			313 \$	-74 \$		6 \$	1 558 \$
ÉNAP	-203 \$			213 \$	-50 \$	566 \$	4 \$	530 \$
ÉTS	-2 881 \$			988 \$	1 893 \$	1 177 \$	2 009 \$	3 186 \$
TÉLUQ	-485 \$			464 \$	21 \$	526 \$	9 \$	535 \$
<b>TOTAL UQ</b>	<b>-6 139 \$</b>	<b>9 464 \$</b>	<b>4 649 \$</b>	<b>11 587 \$</b>	<b>-595 \$</b>	<b>6 041 \$</b>	<b>2 212 \$</b>	<b>27 219 \$</b>

# Some notes on reinvestment

---

- Targeted distribution which supports only certain needs and priorities.
- Generally well received by regional universities and faculties of medicine.
- Implications for university governance and autonomy.
- MELS intends to distribute only \$72M of the \$112M federal reinvestment to the universities, keeping \$40M in reserve for MELS; distribution will be made on the same basis as the provincial reinvestment in December 2006.
- It will probably be the same with the \$40M announced for 2008-2009 and the \$53M for 2009-2010 and the following years (5years).
- Announcement of a « controlled thaw » of tuition fees and compulsory fees, which will polarize the debate.

# Data sources used

---

- **Commission parlementaire de l'éducation (appearances by universities in January and February 2007).**
- **Data received from the Ministère de l'Éducation, du Loisir et du Sport (MELS) on February 15, 2007.**
- **Other (CRÉPUQ, Bureau de la statistique du Québec, Statistics Canada, *etc.*).**

# **Data presented to Commission parlementaire (2000-2001 à 2005-2006)**

---

- **Student enrolment 2000-2001 to 2005-2006.**
  - actual numbers
  - total FTEs
  - full-time undergraduates
  - graduate studies
- **Professorial staff**
  - number of professors
  - number of lecturers
- **Indicators**
  - percentage of courses given by full-time professors
  - average research revenue per full-time professeur
  - completion rate

# **Data presented to Commission parlementaire (cont'd)**

---

- **Operating budget revenue**
- **Restricted funds revenue**
- **Remuneration of administrative and managerial staff**

# Data supplied by MELS

---

- **Operating revenue 1997-1998 to 2004-2005**
- **Operating expenses 1997-1998 to 2004-2005**
- **Not included in these tables are some additional data covering 2005-2006 which have just been received from MELS. These figures will be in the revised version of the CFU-FQPPU reports.**

# Data requested from CRÉPUQ and MELS, but not yet obtained

---

- All data from 1993-1994 through 1997 (the trough and peak years for numbers of professors in Québec).
- Figures by faculty or major disciplinary sector.
- Sociodemographic data.
- Trend analyses.

# First reports

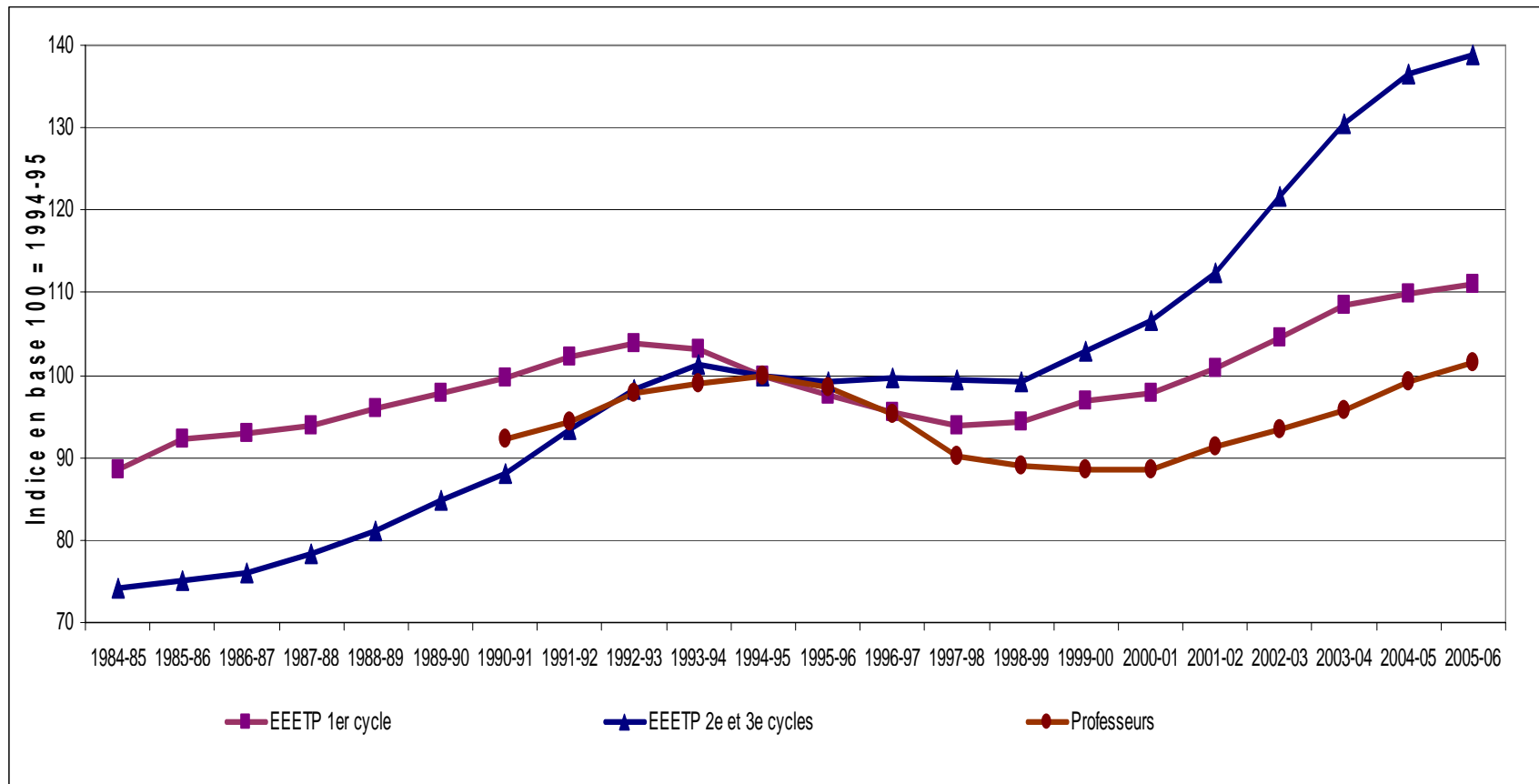


- **Overall report:** *Le financement universitaire au Québec: ébauche d'un état des lieux - Ensemble des universités québécoises.*
- **A series of specific reports giving contextual financial data for each establishment in relation to the whole of the other establishments.**
- **Articles and summaries for popular awareness.**

# Operating budget for Quebec universities (M\$)

	1998-99	2001-02	2002-03	2004-05
<b>Bishop's</b>	26,164	32,203	35,095	40,450
<b>Concordia</b>	205,489	276,390	312,479	346,833
<b>Laval</b>	430,292	515,383	605,318	617,246
<b>McGill</b>	530,436	648,651	686,938	844,202
<b>Montréal</b>	429,984	597,374	676,422	736,414
<b>HEC</b>	63,935	82,944	99,642	105,863
<b>Polytechnique</b>	83,270	127,222	128,038	128,343
<b>Sherbrooke</b>	199,433	258,801	287,742	326,442
<b>UQAT</b>	17,653	23,469	26,950	32,887
<b>UQAC</b>	53,877	65,616	73,177	79,449
<b>UQAM</b>	296,662	345,218	378,298	408,342
<b>UQAR</b>	35,820	45,854	50,148	60,243
<b>UQO</b>	33,712	39,010	44,970	50,728
<b>UQTR</b>	82,507	90,955	96,865	107,216
<b>INRS</b>	68,382	85,717	91,619	97,272
<b>ENAP</b>	16,081	15,117	17,592	21,403
<b>ETS</b>	34,961	51,115	60,234	71,811
<b>Téluq</b>	28,474	28,968	30,485	35,336

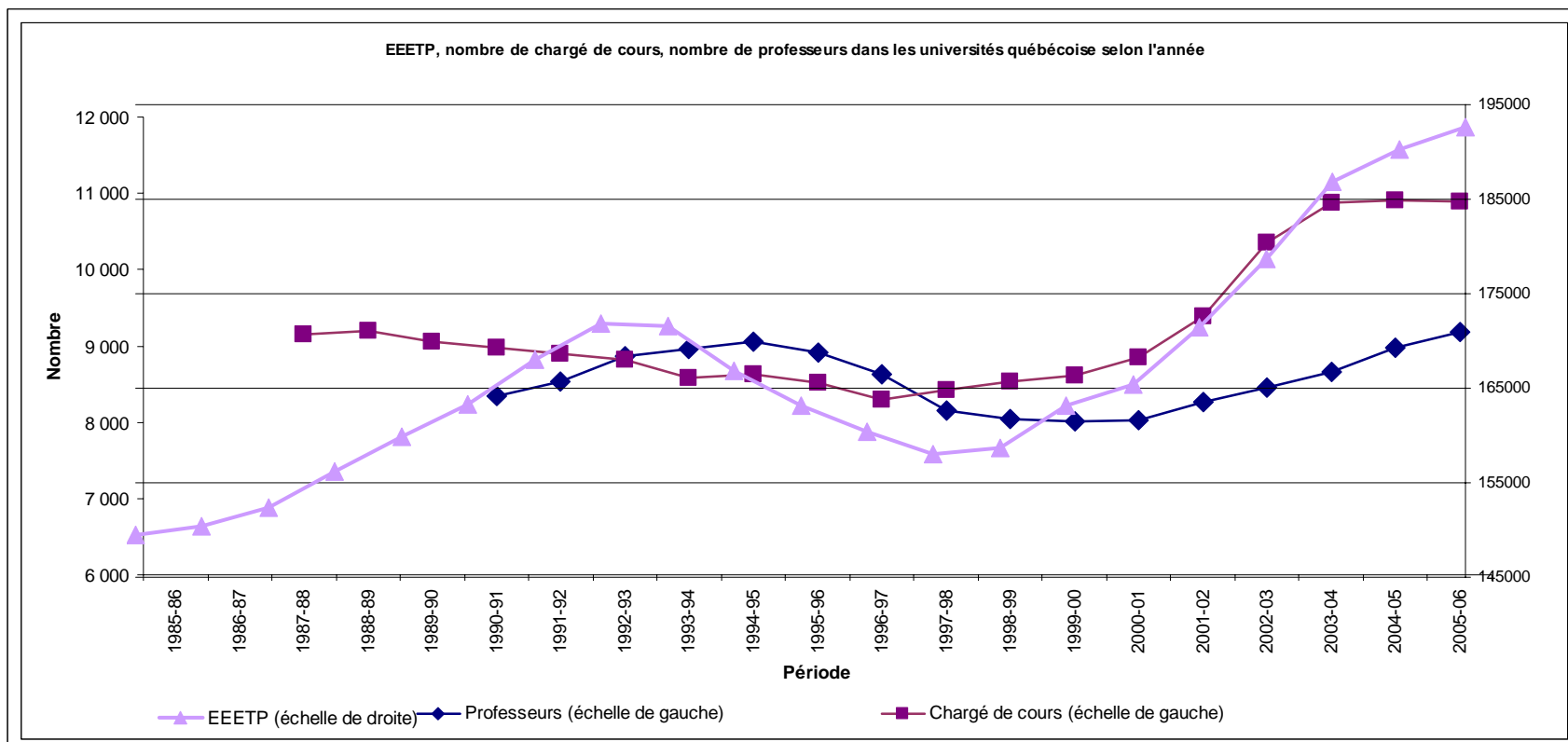
# Student FTEs for undergraduate and graduate enrolment and number of professors for the years available (base 100=1994-95)



# Ratio of FTE enrolment in all levels to number of professors

	1994-95	2004-05	2005-06
<b>Bishop's</b>	19.3	20.9	19.8
<b>Concordia</b>	20.0	26.7	26.5
<b>Laval</b>	17.1	20.3	20.8
<b>McGill</b>	15.6	16.4	16.0
<b>Montréal</b>	17.5	21.7	21.6
<b>HEC</b>	30.7	37.5	35.8
<b>Polytechnique</b>	16.6	18.6	17.8
<b>Sherbrooke</b>	17.0	16.9	16.7
<b>UQAT</b>	20.3	13.5	14.5
<b>UQAC</b>	19.1	19.4	18.7
<b>UQAM</b>	25.0	27.8	27.3
<b>UQAR</b>	18.2	18.3	19.3
<b>UQO</b>	21.8	21.0	19.9
<b>UQTR</b>	21.1	22.8	22.4
<b>INRS</b>	1.9	2.3	2.2
<b>ENAP</b>	10.1	16.3	15.7
<b>ETS</b>	21.3	25.4	24.5
<b>Téluq</b>	53.8	64.5	58.5
<b>Total</b>	18.4	21.2	21.0

# Number of professors, lecturers and FTE enrolment in Quebec universities (for the years available)



# Average number of credited teaching activities taught per professor

	2000-01	2001-02	2002-03	2003-04	2004-05	2005-06
<b>Bishop's</b>	5.80	5.21	5.37	5.45	5.21	5.36
<b>Concordia</b>	4.79	4.86	4.71	5.36	4.63	4.42
<b>Laval</b>	5.12	4.88	4.90	5.05	4.74	4.83
<b>McGill</b>	4.21	4.09	3.90	3.67	3.93	4.18
<b>Montréal</b>	4.65	4.51	4.46	4.64	4.74	4.77
<b>HEC</b>	4.23	4.08	3.83	3.45	3,50	3.47
<b>Polytechnique</b>	3.62	3.00	3.03	3.03	2.85	2.64
<b>Sherbrooke</b>	2.91	2.93	2.99	2.99	2.91	2.92
<b>UQAT</b>	3.19	3.29	3.44	3.73	3.76	3.87
<b>UQAC</b>	3.80	4.33	4.04	4.19	3.87	3.62
<b>UQAM</b>	4.74	4.70	4.66	4.42	4,,17	3.94
<b>UQAR</b>	4.08	4.08	4.41	4.51	4.54	4.45
<b>UQO</b>	4.02	3.73	3.52	3.40	3.52	3.21
<b>UQTR</b>	3.68	3.45	3.55	3.40	3.53	3.62
<b>INRS</b>	1.42	1.41	1.35	1.51	1.58	1.49
<b>ÉNAP</b>	2.98	3.22	3.79	4.07	3.97	3.39
<b>ÉTS</b>	5.05	4.04	5.46	5.24	4.29	4.46
<b>Total average</b>	4.36	4.24	4.20	4.23	4.14	4.13

# Average number of credited teaching activities per lecturer

	2000-01	2001-02	2002-03	2003-04	2004-05	2005-06
<b>Bishop's</b>	n.d.	n.d.	n.d.	n.d.	n.d.	n.d.
<b>Concordia</b>	2.0	1.9	1.9	2.0	2.0	2.1
<b>Laval</b>	4.2	3.9	3.5	3.4	3.5	3.6
<b>McGill</b>	2.1	2.0	2.0	1.9	2.4	2.4
<b>Montréal</b>	1.9	1.9	1.9	2.0	2.0	2.0
<b>HEC</b>	2.6	2.6	2.7	2.7	2.6	2.6
<b>Polytechnique</b>	1.4	1.5	1.4	1.2	1.3	1.3
<b>Sherbrooke</b>	1.7	1.6	1.6	1.5	1.6	1.6
<b>UQAT</b>	2.3	1.5	1.7	2.1	1.7	2.1
<b>UQAC</b>	1.4	1.5	1.4	1.4	1.4	1.4
<b>UQAM</b>	2.3	2.3	2.3	2.3	2.3	2.3
<b>UQAR</b>	2.0	2.0	2.0	2.2	2.3	2.4
<b>UQO</b>	1.9	2.1	2.1	2.0	2.2	2.0
<b>UQTR</b>	2.3	2.4	2.3	2.4	2.3	2.1
<b>ÉNAP</b>	1.9	2.2	1.7	2.3	2.3	2.2
<b>ÉTS</b>	1.8	2.0	2.5	2.5	2.5	2.1
<b>Total average</b>	2.3	2.3	2.1	2.1	2.2	2.2

# Salary as a percentage of operating expenses in each university

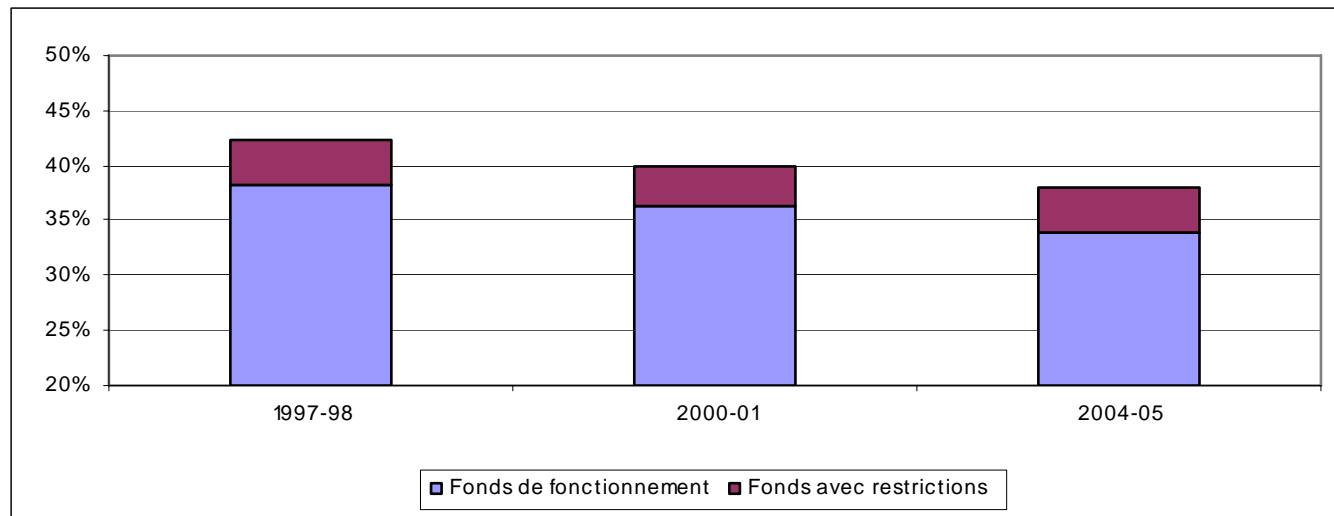
	1997-98	2000-01	2004-05
<b>Bishop's</b>	68,2%	65,9%	63,7%
<b>Concordia</b>	69,7%	68,3%	67,9%
<b>Laval</b>	69,1%	65,7%	59,2%
<b>McGill</b>	61,4%	60,3%	55,6%
<b>Montréal</b>	68,8%	63,1%	59,5%
<b>HEC</b>	66,6%	66,0%	68,1%
<b>Polytechnique</b>	64,2%	59,1%	59,2%
<b>Sherbrooke</b>	71,9%	68,8%	68,1%
<b>UQAT</b>	59,4%	60,9%	65,4%
<b>UQAC</b>	77,1%	76,4%	76,5%
<b>UQAM</b>	69,1%	72,1%	72,4%
<b>UQAR</b>	78,7%	75,5%	73,8%
<b>UQO</b>	75,0%	76,2%	76,3%
<b>UQTR</b>	71,3%	75,5%	77,1%
<b>INRS</b>	43,4%	53,6%	42,9%
<b>ÉNAP</b>	58,6%	71,3%	74,4%
<b>ÉTS</b>	70,7%	64,8%	65,2%
<b>TÉLUQ</b>	70,3%	73,7%	78,9%
<b>UQSS</b>	32,8%	45,1%	40,6%
<b>Total</b>	67,0%	65,5%	62,4%

# Average revenue from students (tuition, compulsory and other fees) by FTE, in dollars

	1997-98	2000-01	2004-05
<b>Bishop's</b>	2,906	3,268	4,227
<b>Concordia</b>	2,737	3,401	3,924
<b>Laval</b>	2,091	2,205	2,456
<b>McGill</b>	3,444	4,220	5,143
<b>Montréal</b>	2,083	2,261	2,345
<b>HEC</b>	2,478	2,740	3,125
<b>Polytechnique</b>	2,366	2,589	2,954
<b>Sherbrooke</b>	2,292	2,458	2,471
<b>UQAT</b>	1,824	2,041	2,157
<b>UQAC</b>	2,152	2,268	2,303
<b>UQAM</b>	2,043	2,274	2,216
<b>UQAR</b>	1,987	2,016	2,032
<b>UQO</b>	2,053	2,135	2,299
<b>UQTR</b>	2,057	2,000	2,269
<b>INRS</b>	1,690	2,312	2,089
<b>ENAP</b>	3,298	3,837	3,312
<b>ETS</b>	2,565	2,672	2,457
<b>Téluq</b>	2,000	2,164	2,443

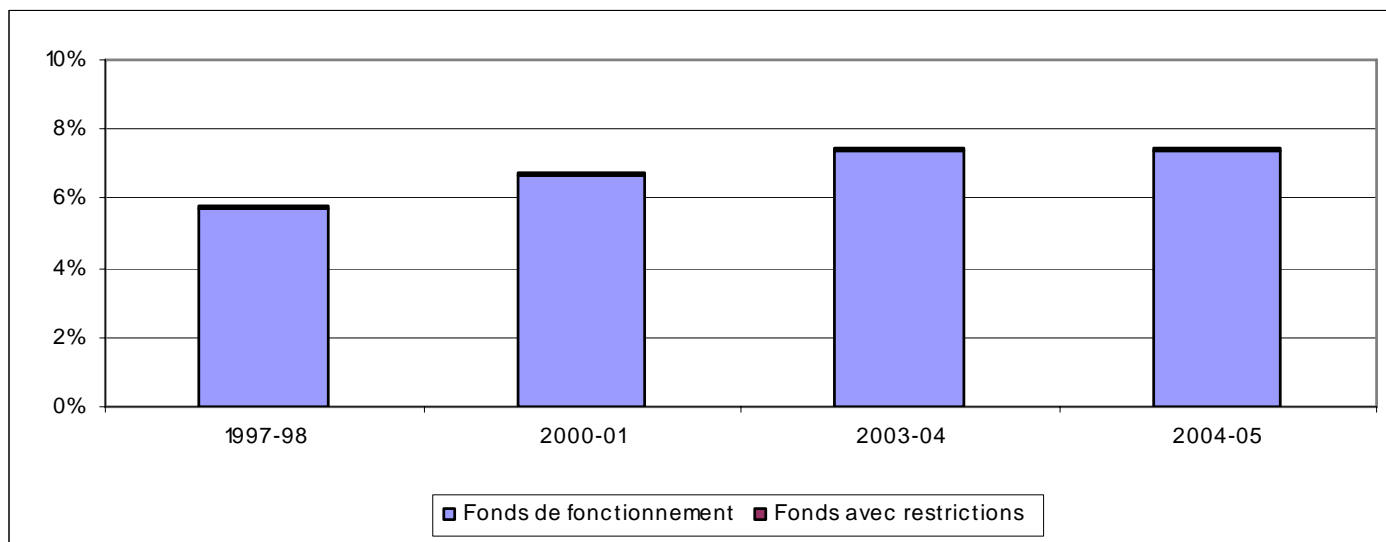
# Faculty portion of salary mass envelope

	<b>1997-98</b>	<b>2000-01</b>	<b>2004-05</b>
<b>Operating budget</b>	38.2%	36.3%	34.0%
<b>Restricted funds</b>	4.1%	3.7%	4.0%
<b>TOTAL</b>	42.4%	40.0%	38.0%



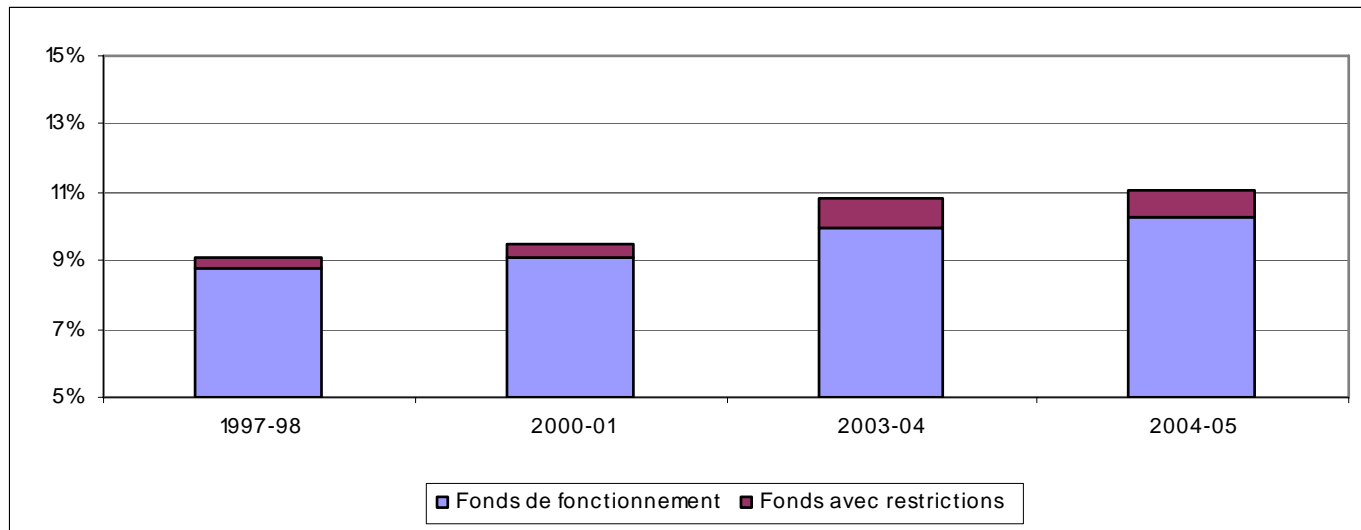
# Lecturers' portion of salary mass envelope

	1997-98	2000-01	2003-04	2004-05
<b>Operating budget</b>	5.75%	6.63%	7.37%	7.37%
<b>Restricted funds</b>	0.08%	0.10%	0.10%	0.09%
<b>TOTAL</b>	5.83%	6.73%	7.47%	7.46%



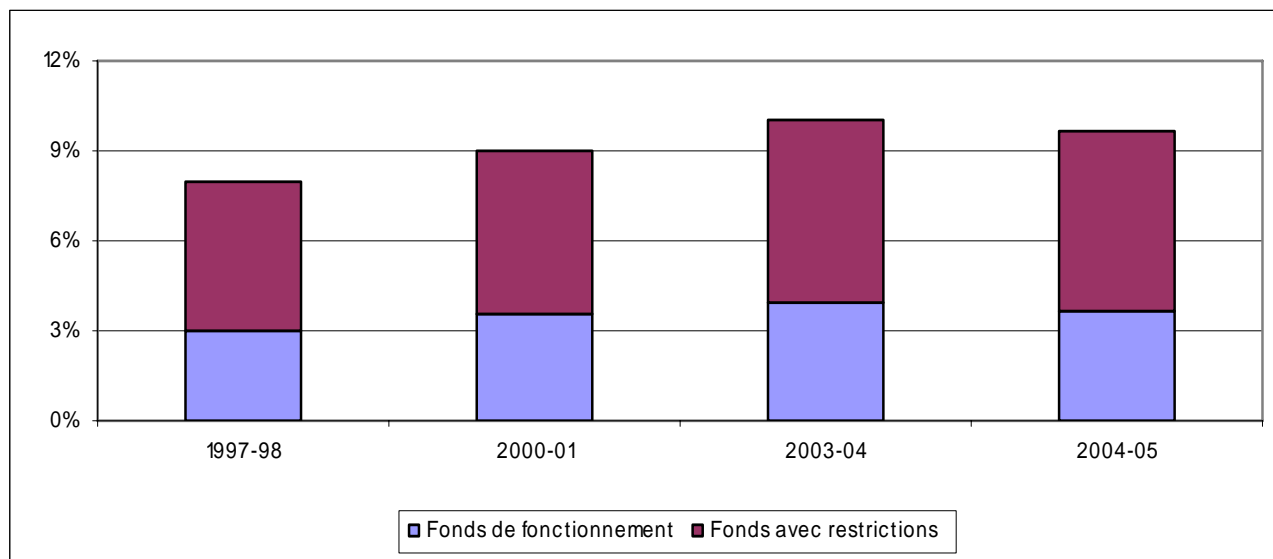
# Administrative staff portion of salary mass envelope

	1997-98	2000-01	2003-04	2004-05
<b>Operating budget</b>	8.80%	9.10%	10.00%	10.30%
<b>Restricted funds</b>	0.30%	0.40%	0.80%	0.80%
<b>TOTAL</b>	9.10%	9.60%	10.80%	11.10%



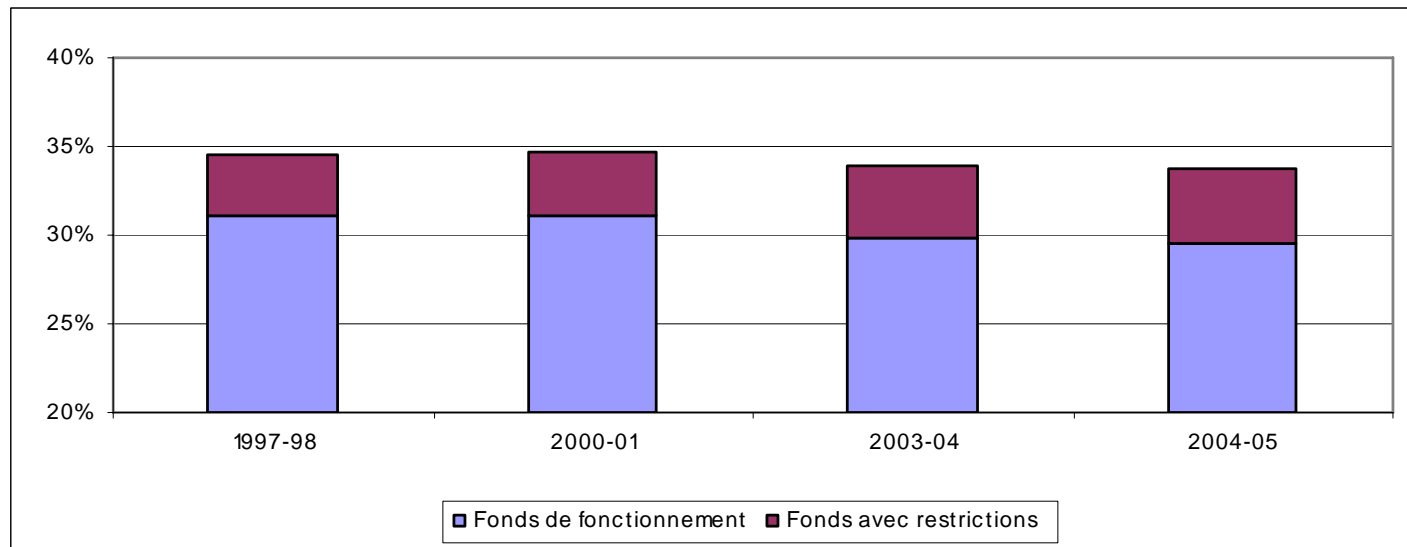
# Portion of salary mass envelope for other teaching staff

	1997-98	2000-01	2003-04	2004-05
<b>Operating budget</b>	3.00%	3.60%	3.90%	3.70%
<b>Restricted funds</b>	5.00%	5.40%	6.10%	6.00%
<b>TOTAL</b>	8.10%	9.00%	10.00%	9.70%



# Portion of salary mass envelope for support staff and trades

	1997-98	2000-01	2003-04	2004-05
<b>Operating budget</b>	31.10%	31.10%	29.90%	29.60%
<b>Restricted funds</b>	3.50%	3.60%	4.00%	4.20%
<b>TOTAL</b>	34.60%	34.70%	33.90%	33.70%



# Provenance of Bishop's operating budget

<b>Source of funds</b>	<b>1997-98</b>	<b>2000-01</b>	<b>2003-04</b>	<b>2004-05</b>
Students	5,920	6,997	9,425	10,057
Québec	10,643	13,822	17,422	17,846
Canada	187	213	580	785
Other	7,566	8,861	11,222	11,762
<b>TOTAL</b>	<b>24,317</b>	<b>29,893</b>	<b>38,649</b>	<b>40,450</b>

# Provenance of Bishop's operating budget compared to all Quebec universities

Source of funds Bishop's	1997-98	2000-01	2003-04	2004-05
Students	24 %	23 %	24 %	25 %
Québec	44 %	46 %	45 %	44 %
Canada	1 %	1 %	2 %	2 %
Other	31 %	30 %	29 %	29 %
TOTAL	100 %	100 %	100 %	100 %

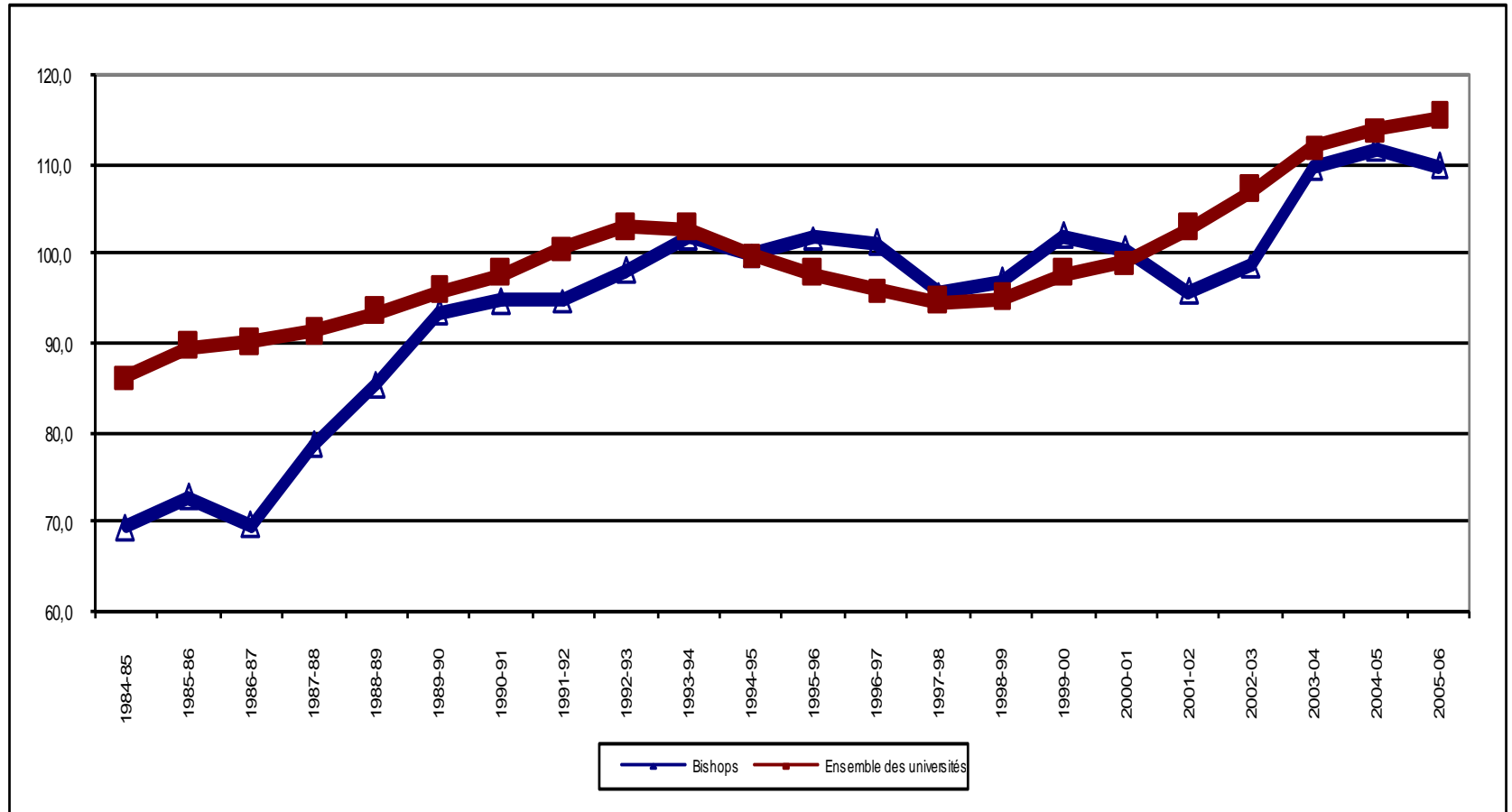
Source of funds all	1997-98	2000-01	2003-04	2004-05
Students	15.9%	14.9%	13.3%	14.0%
Québec	57.4%	54.1%	51.8%	53.4%
Canada	7.7%	10.6%	13.6%	13.0%
Other	19.0%	20.5%	21.3%	19.6%

# Portion of Bishop's budget, by source of funds, compared to all Quebec universities

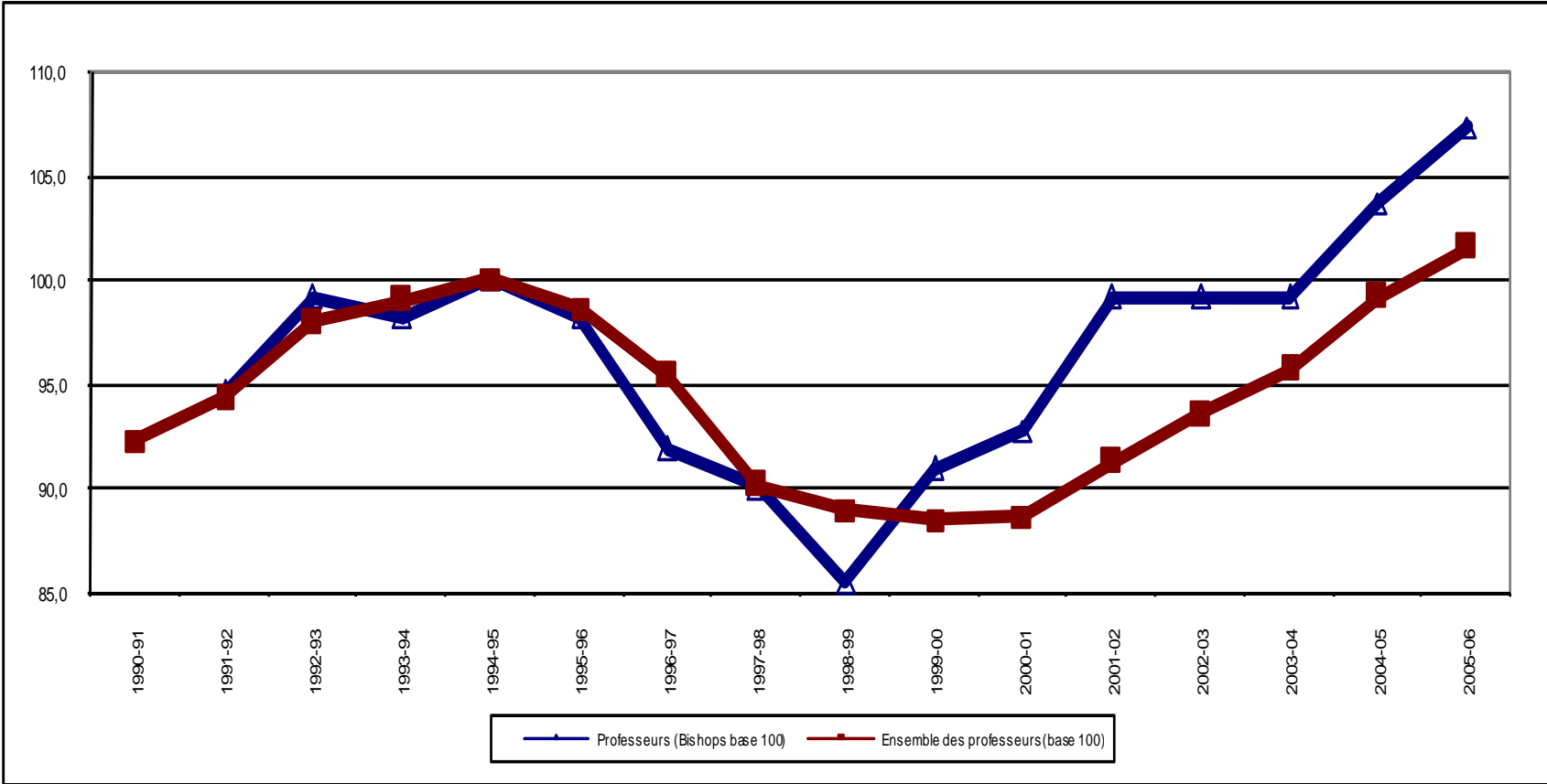
Source of funds	1997-98	2000-01	2003-04	2004-05
Students (Bish/all)	1,6 %	1,6 %	1,7 %	1,8 %
Québec (Bish/all)	0,8 %	0,8 %	0,8 %	0,8 %
Canada (Bish/all)	0,1 %	0,1 %	0,1 %	0,1 %
Other (Bish/all)	1,7 %	1,4 %	1,3 %	1,5 %
TOTAL (Bish/all)	1,0 %	1,0 %	0,9 %	1,0 %

# Bishop's FTE enrolment compared to Quebec universities

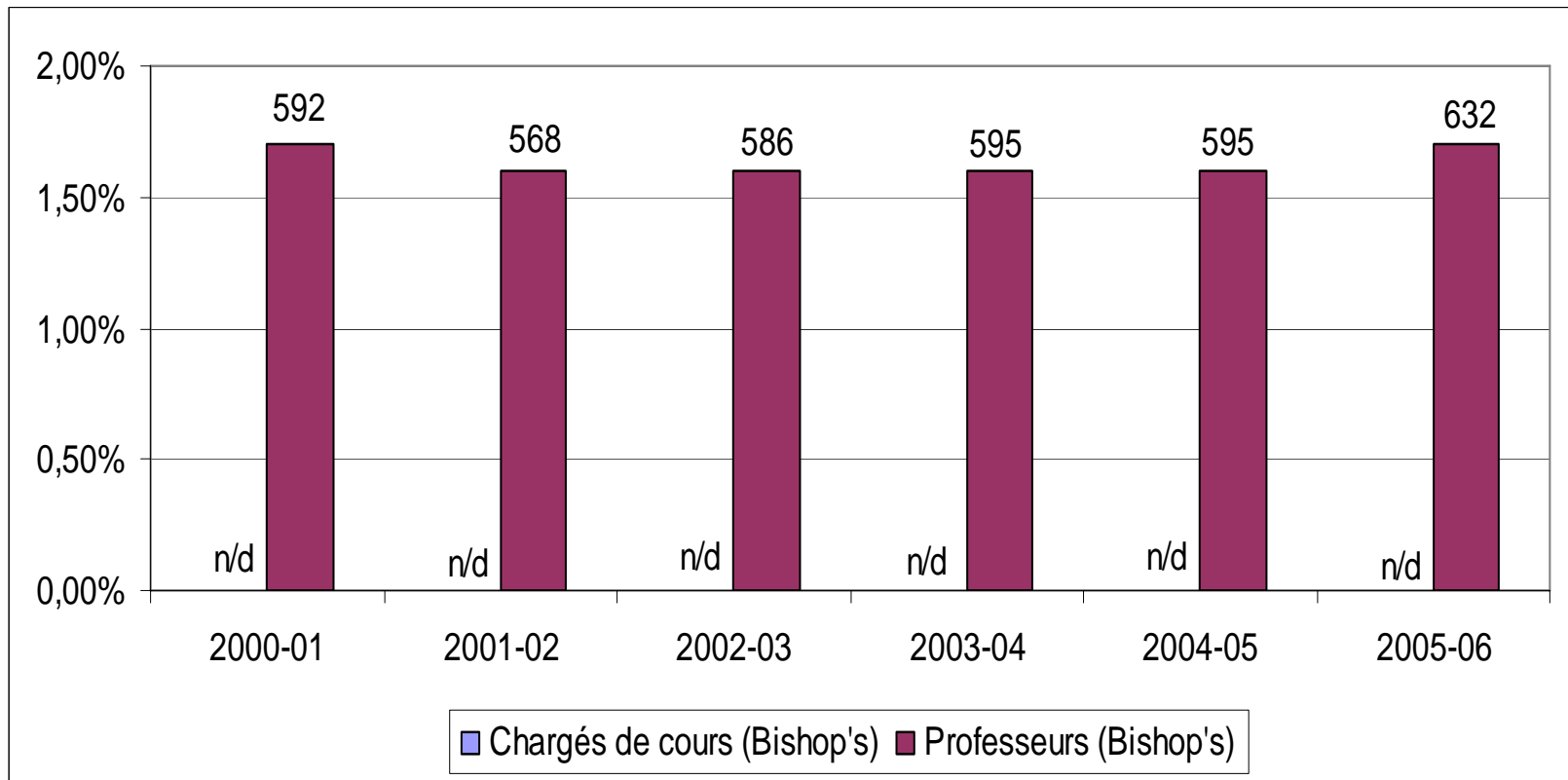
100 = 1994-95



# Number of professors at Bishop's and all Quebec universities 100 = 1994-95

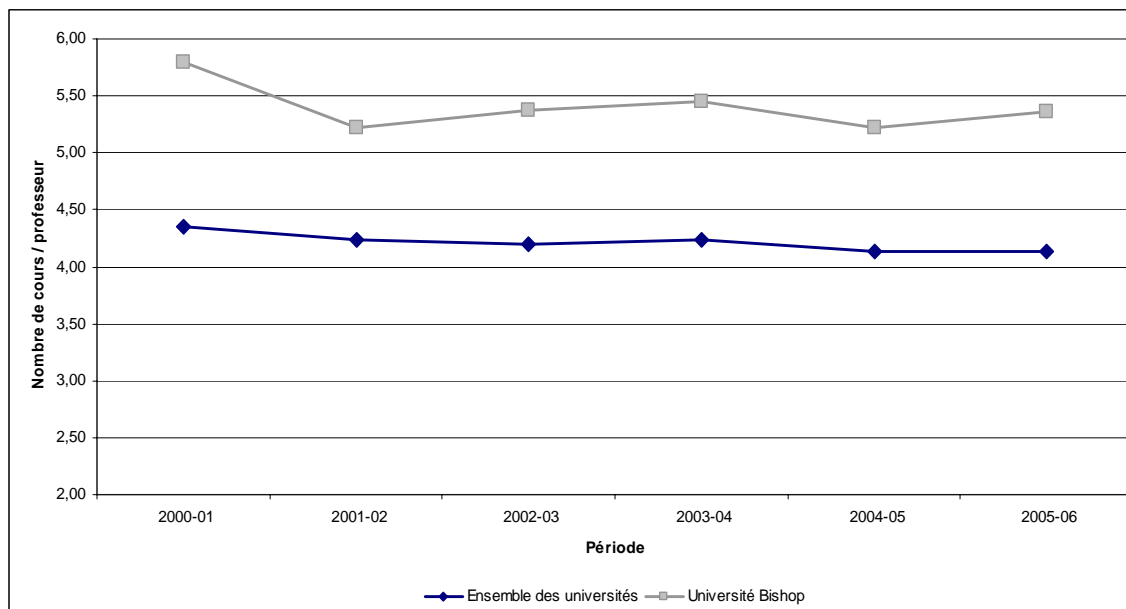


# Number and portion of credit courses taught by Bishop's professors and lecturers compared to all Quebec universities



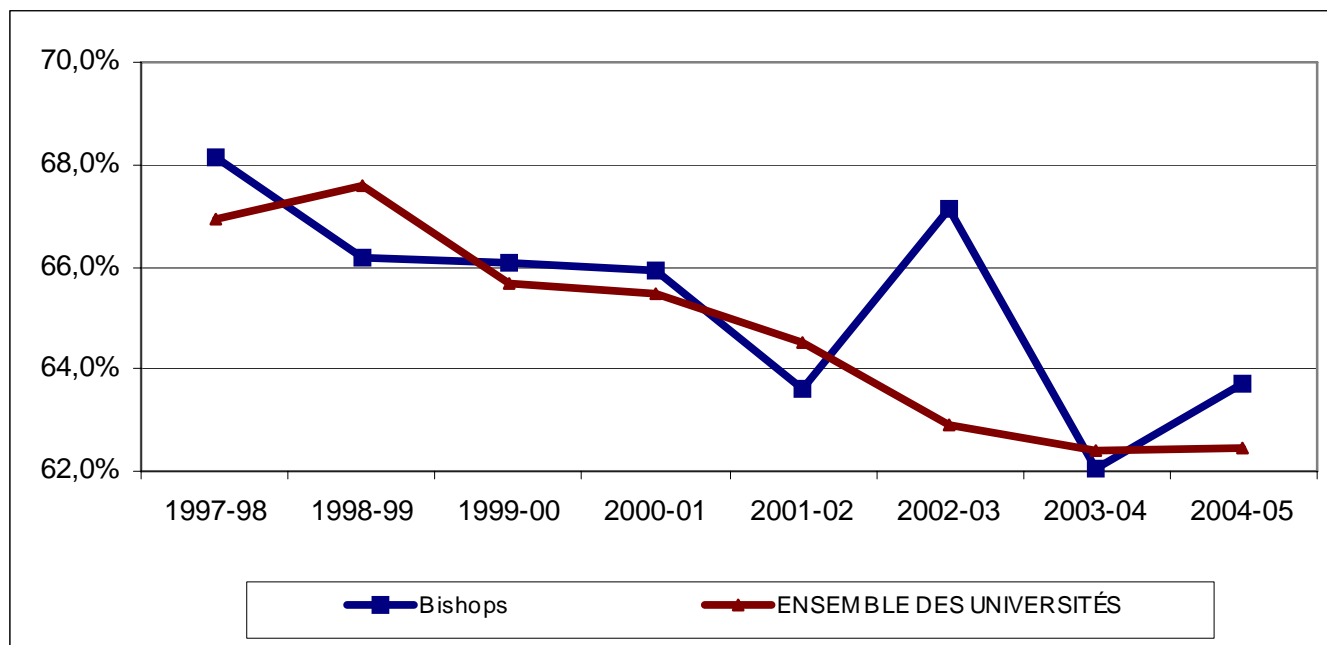
# Average number of credit courses taught by professors

	2000-01	2001-02	2002-03	2003-04	2004-05	2005-06
All universities	4.36	4.24	4.20	4.23	4.14	4.13
Bishop's	5.80	5.21	5.37	5.45	5.21	5.36



# Salary as a percentage of expenses for Bishop's and all Quebec universities

	1997-98	1998-99	1999-00	2000-01	2001-02	2002-03	2003-04	2004-05
<b>Bishop's</b>	68.2 %	66.2 %	66.1 %	65.9 %	63.6 %	67.1 %	62.0 %	63.7 %
<b>All universities</b>	67,0 %	67.6 %	65.7 %	65.5 %	64.5 %	62.9 %	62.4 %	62.4 %



# Preliminary conclusions

---

- **There is a significant imbalance between the increase in teaching-research workload (increase in enrolment, especially at the graduate level, and increase in grants and research contracts) and the number of professors to do it.**
- **There is a significant imbalance in apportioning university resources for basic operations.**
- **« Accessibility », « Knowledge society » and « Rattrapage » are empty words without serious investment in professoral staff in Quebec universities.**

# Next steps



- **We continue to gather data from MELS, CREPUQ and other sources.**
- **We contact faculty associations to obtain missing data and analyze data for each establishment.**
- **Priority in these analyses given to capital assets and restricted funds (report date set for autumn 2008).**
- **We produce updates of the financial data annually or bi-annually.**



**Thank you for your attention**

# PPT team

---

Contributors to this presentation:

- **Régis Fortin (UQAR)**
- **Lucie Lamontagne (UQAM)**
- **André Breton (UQAM)**
- **Louise Briand (UQO)**
- **Norman Ingram (Concordia)**
- **Martin Maltais (Laval)**
- **Cécile Sabourin (FQPPU)**
- **Michel Umbriaco (TÉLUQ-UQÀM)**

# **Mandate of the Comité sur le financement (May 2006)**

---

- **Inform and educate the members of the Conseil fédéral on the political and technical aspects of university financing.**
- **Encourage discussion and debate to help the Federation take positions on matters relating to university financing.**

# Mandate of the Comité de financement

---

- **Which requires us to:**
  - **Develop our knowledge of the technical aspects of Quebec university financing**
  - **Develop a critical position on the current situation relating to university financing**
  - **Develop our knowledge of internal university practices concerning the distribution of financial resources.**

# Current members of the Comité sur le financement (regular)

---

- **André Breton (UQAM)**
- **Louise Briand (UQO)**
- **Régis Fortin (UQAR)**
- **Claude Genest (UQTR)**
- **Brendan Gillon (McGill)**
- **François Godard (UQAT)**
- **Norman Ingram (Concordia)**
- **Lucie Lamontagne (UQAM)**
- **Cécile Sabourin (FQPPU)**
- **Michel Umbriaco (TÉLUQ-UQAM), President, CFU**

# Members of the Comité sur le financement (associate)

---

- **Alain Gamelin (UQTR)**
- **Martin Maltais (Laval)**